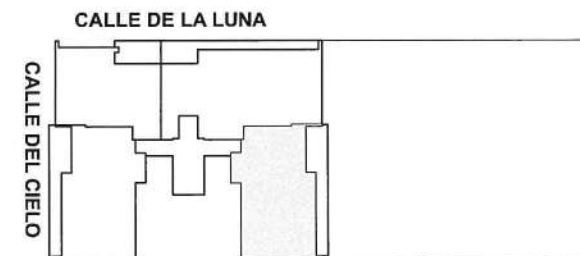
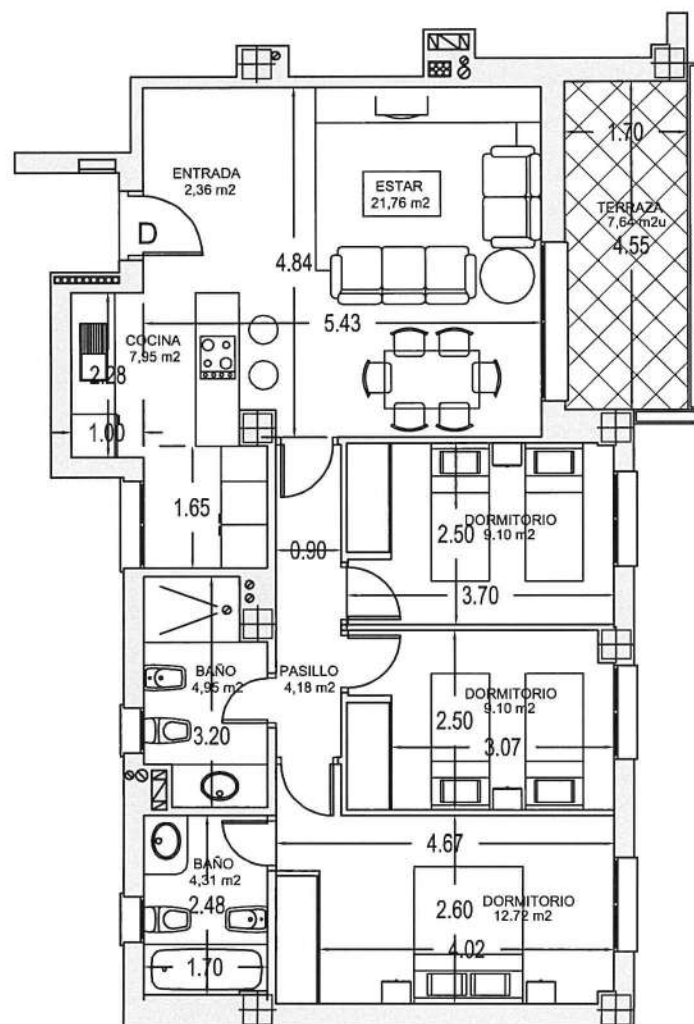


RESIDENCIAL ZAUDIUM - VIVIENDA: 5º D



CUADRO DE SUPERFICIES

SUPERFICIES ÚTILES

| | |
|-----------------|-------|
| Entrada | 2,36 |
| Estar | 21,75 |
| Cocina | 7,95 |
| Pasillo | 4,19 |
| Dormitorio 1 | 9,10 |
| Dormitorio 2 | 9,10 |
| Baño | 4,95 |
| Dormitorio Ppal | 12,72 |
| Baño Suite | 4,31 |

Total útil 76.43

Terraza 7.64

SUPERFICIES CONSTRUIDAS

| | |
|--------------|--------|
| Total CONST. | 90.62 |
| Total PPZCC | 106.79 |

ANEXOS

TRASTERO 20
PARKING 20

CALLE DE LA LUNA. PARCELA RLM1-E1.PP SUS-1
TOMARES (SEVILLA)

ESCALA 1:100